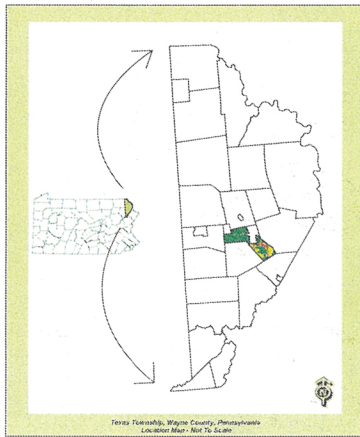
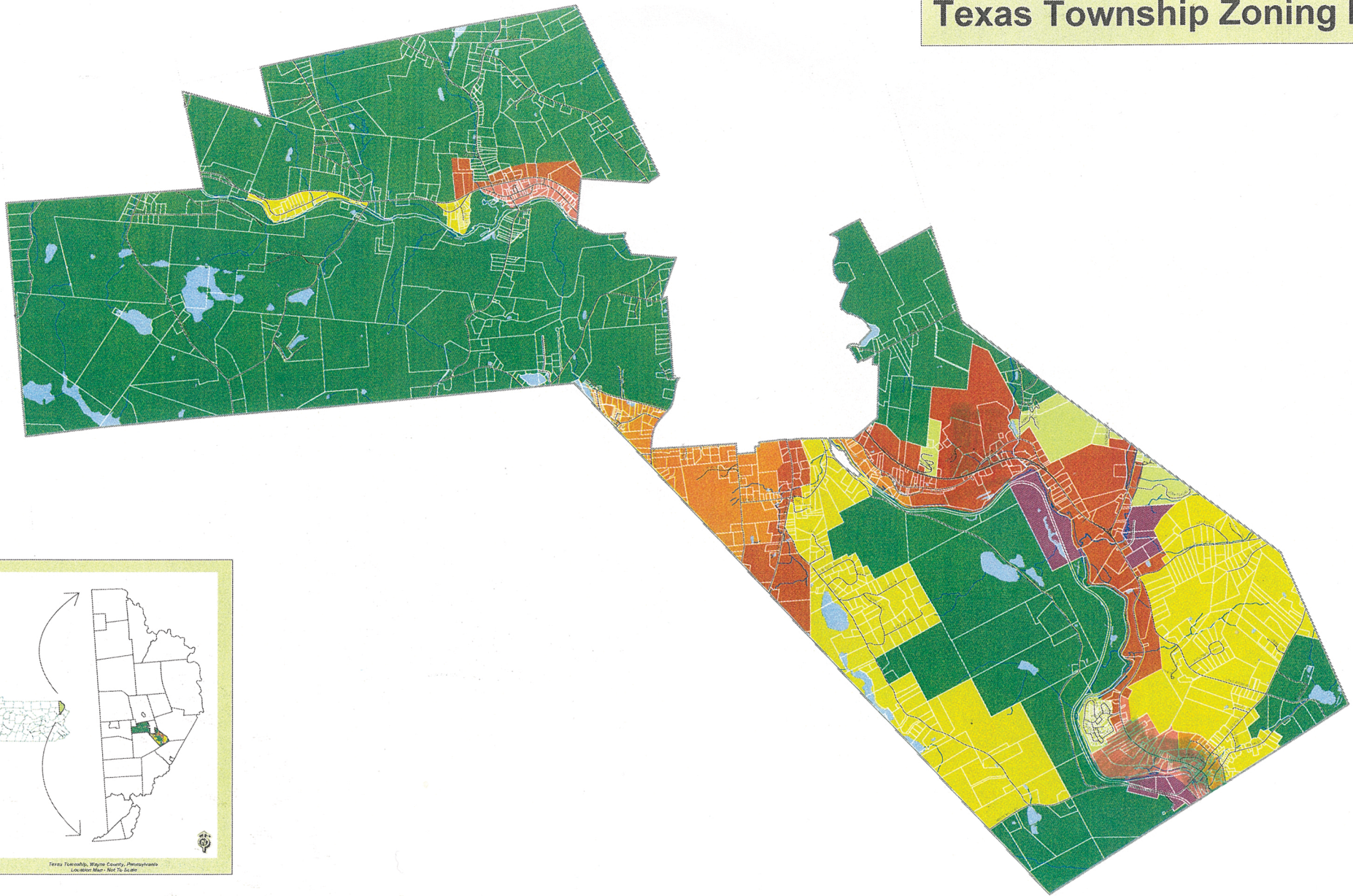


Texas Township Zoning Map



Texas Township Supervisors - Adoption Block

Date Adopted by Texas Township Supervisors -

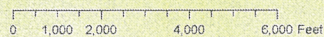
--	--	--

est. Date

This map information compiled from Texas Township Zoning Map adopted March 21, 1994 and amended on December 20, 1999, June 13, 2006, and November 7, 2011. This zoning map was last amended in 2012 to add an amendment from November 19, 2006, which was approved by the Texas Township Supervisors but was never incorporated on the map.

Parcel line data obtained from Wayne County Tax Assessment Office

* Note: Along with the other General Districts, there is also an additional floodplain classification. (See Article IV, Section 410 in the Texas Township Zoning Ordinance.)



1 inch equals 1000 feet

Texas Township Zoning Map



Texas Township, Wayne County, Pennsylvania

This map was prepared by the Wayne County Department of Planning - March, 2012

General Features

- Roads
- Watercourses
- ▭ Parcels
- ▭ Waterbodies
- ▭ Texas Township Boundary
- ▭ Municipal Boundaries

Legend

- | | |
|--------------------------------------|-------------------------|
| RU Rural | C-1 General Commercial |
| R-1 Low-Density Residential | C-2 Highway Commercial |
| R-2 Multi-Family Residential | ID Industrial |
| R-3 Residential - Mobile Home Parks | |